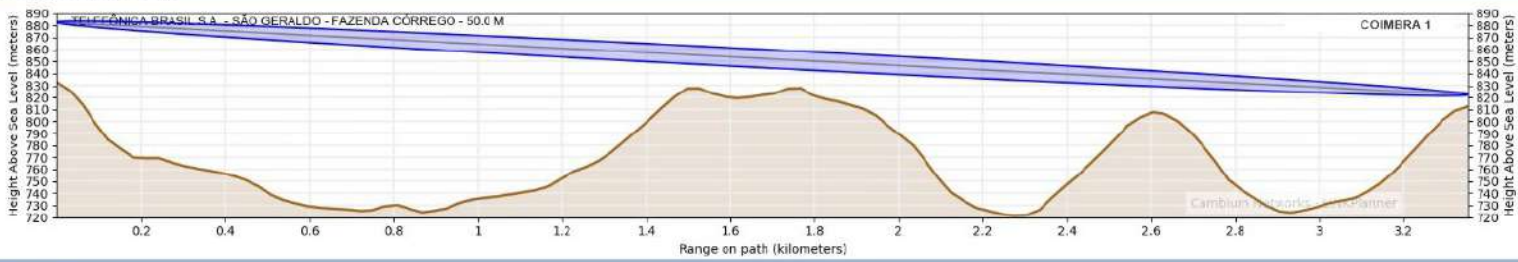


Profile: 3.353 kilometers. Line-of-Sight



Configuration at Each End

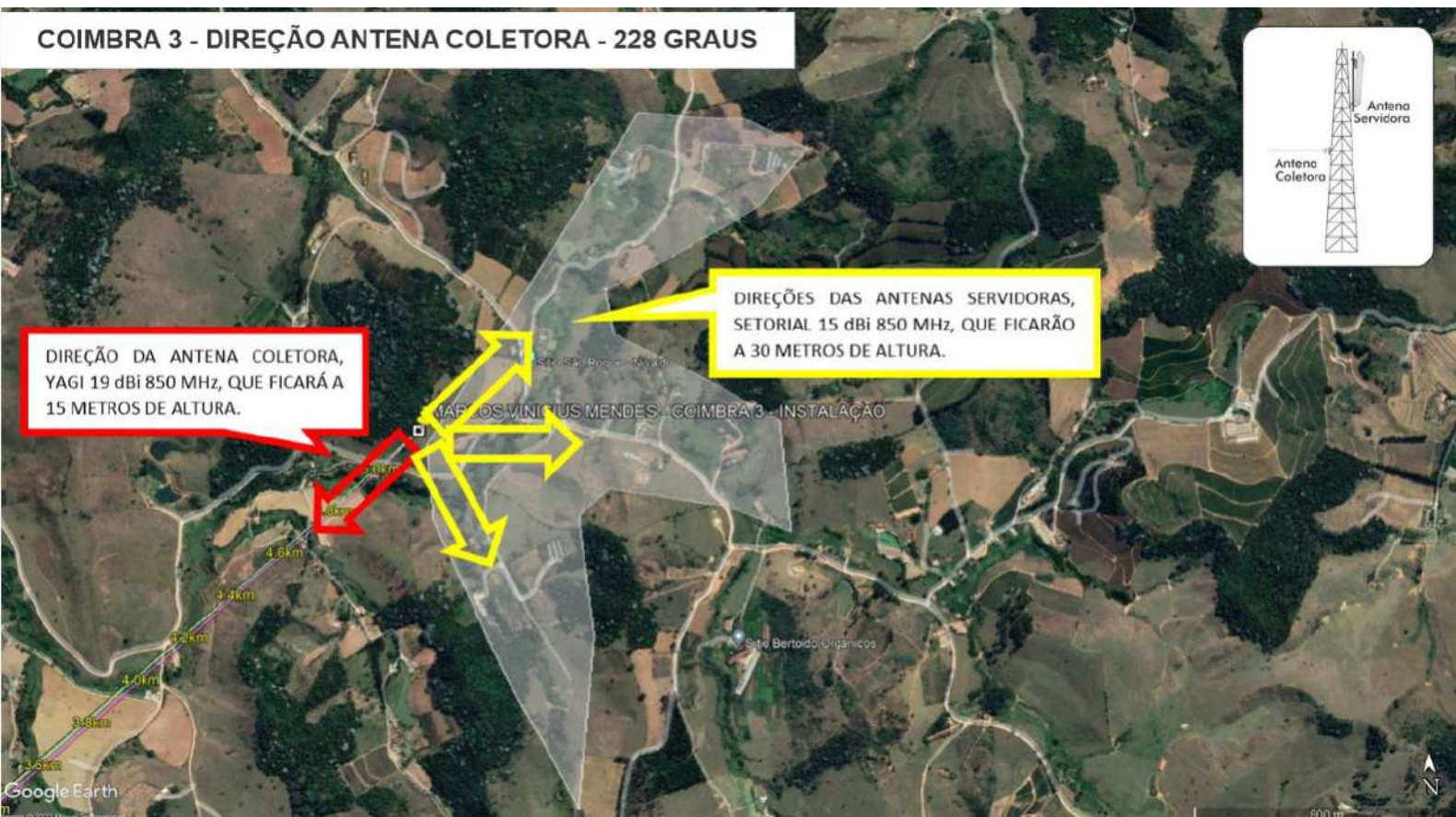
TELEFÔNICA BRASIL S.A. - SÃO GERALDO - FAZENDA CÔRREGO - 50.0 M

Radio Waves 6ft Dual-Polar Parabolic SPD6-2.4NS (30.3dBi)
 Antenna Height: 50 meters (Max height at site is 50.0 m)

COIMBRA 1

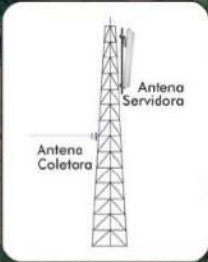
MARS 1ft Dual-Polar Flat Panel MA-WA25-DP19 (19.0dBi)
 Antenna Height: 10 meters (Max height at site is 10.0 m)

COIMBRA 3 - DIREÇÃO ANTENA COLETORA - 228 GRAUS



COIBRA SÃO VENANCIO 1 - DIREÇÃO ANTENA COLETORA - 207 GRAUS

CA 2 - VIVO - 10.0 M



DIREÇÕES DAS ANTENAS SERVIDORAS, SETORIAL 15 dBi 850 MHz, QUE FICARÃO A 30 METROS DE ALTURA.

DIREÇÃO DA ANTENA COLETORA, YAGI 19 dBi 850 MHz, QUE FICARÁ A 15 METROS DE ALTURA.

Profile: 4.548 kilometers. Line-of-Sight



Configuration at Each End

TELEFÔNICA BRASIL S.A. - SÃO GERALDO - FAZENDA CÔRREGO - 50.0 M

Radio Weres 6ft Dual-Polar Parabolic SPD6-2.4NS (30.3dB)

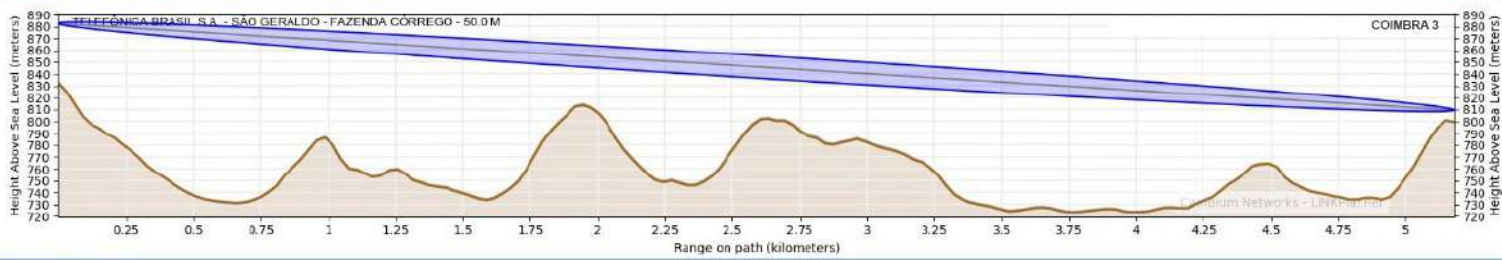
Antenna Height: 50 meters (Max height at site is 50.0 m)

COIMBRA 2

MARS 1ft Dual-Polar Flat Panel MA-WA25-DP19 (19.0dB)

Antenna Height: 10 meters (Max height at site is 10.0 m)

Profile: 5.179 kilometers, Line-of-Sight



Configuration at Each End

TELEFÔNICA BRASIL S.A. - SÃO GERALDO - FAZENDA CÔRREGO - 50.0 M

Radio Waves 6ft Dual-Polar Parabolic SPD6-2.4NS (30.3dB)

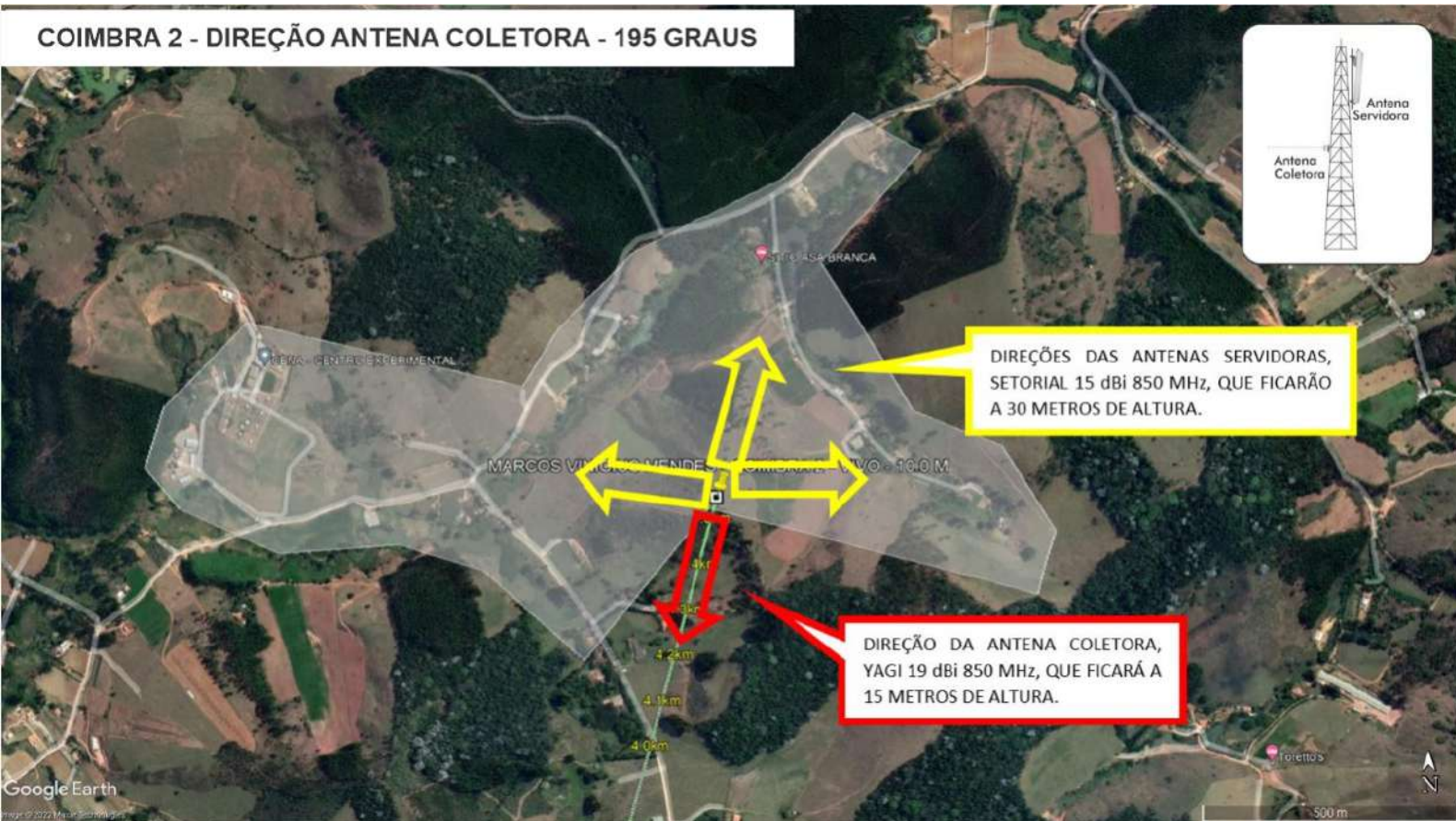
Antenna Height: meters (Max height at site is 50.0 m)

COIMBRA 3

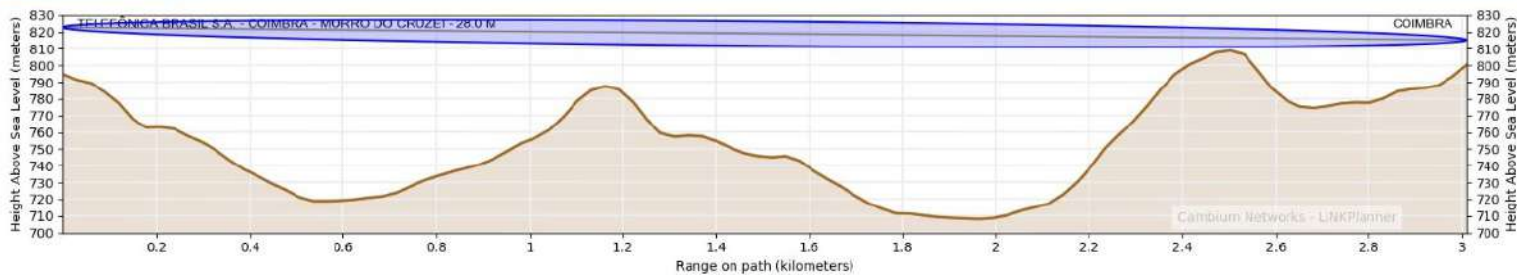
MARS 1ft Dual-Polar Flat Panel MA-WA25-DP19 (19.0dBi)

Antenna Height: meters (Max height at site is 10.0 m)

COIMBRA 2 - DIREÇÃO ANTENA COLETORA - 195 GRAUS



Profile: 3.010 kilometers, Line-of-Sight



Configuration at Each End

TELEFÔNICA BRASIL S.A. - COIMBRA - MORRO DO CRUZEI - 28.0 M

Radio Waves 6ft Dual-Polar Parabolic SPD6-2.4NS (30.3dBi)

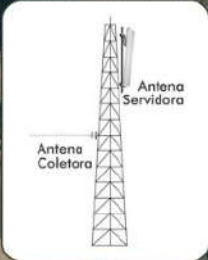
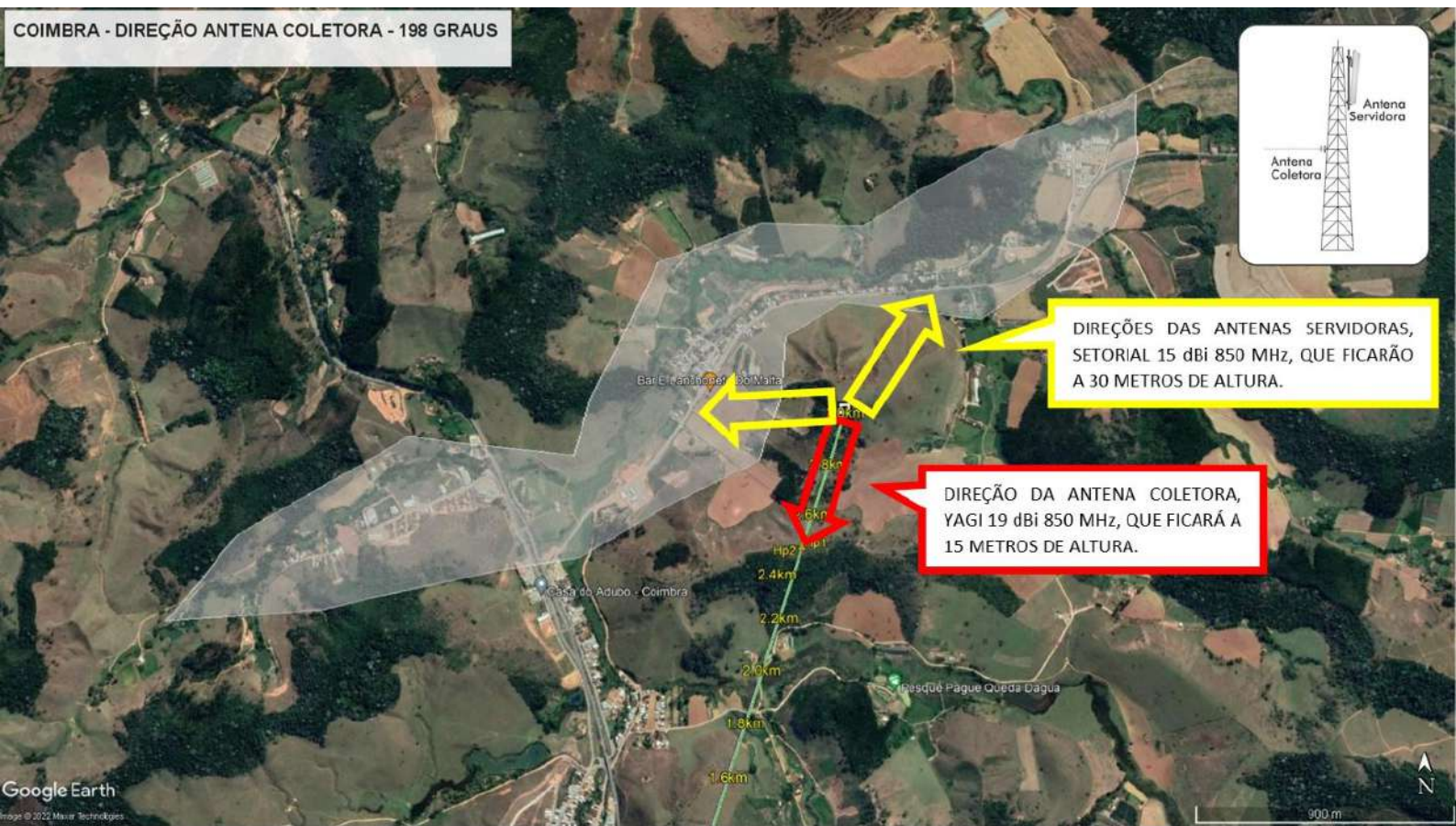
Antenna Height: 28 meters (Max height at site is 28.0 m)

COIMBRA

MARS 1ft Dual-Polar Flat Panel MA-WA25-DP19 (19.0dBi)

Antenna Height: 15 meters (Max height at site is 10.0 m)

COIMBRA - DIREÇÃO ANTENA COLETORA - 198 GRAUS



DIREÇÕES DAS ANTENAS SERVIDORAS, SETORIAL 15 dBi 850 MHz, QUE FICARÃO A 30 METROS DE ALTURA.

DIREÇÃO DA ANTENA COLETORA, YAGI 19 dBi 850 MHz, QUE FICARÁ A 15 METROS DE ALTURA.